

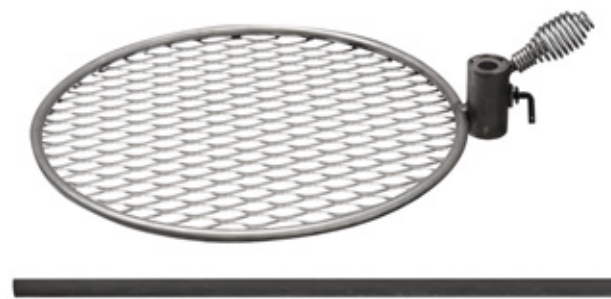


**breeo**  
rethinking fire





The new Double Flame Fire Pit requires zero assembly. Pull it out of the box, and light a fire. It is also extremely portable, making it easy to haul along on your next camping trip. Perhaps its time to impress your friends by bringing it to their house next time you have a party! The grilling feature of the Double Flame Fire Pit is completely adjustable and easy to use. Simply slide the post into the sleeve, slip in the pin, and viola! Your fire pit is ready to cook. Adjust the height of the grill to cook depending on the amount of heat desired



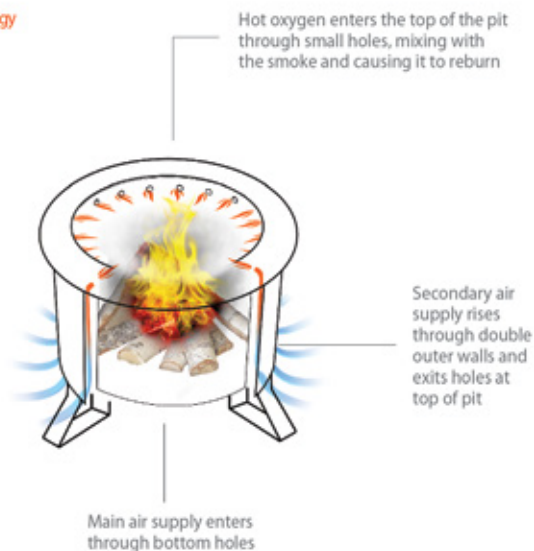
22" Outside Diameter  
19" Wall-to-Wall Inside Diameter  
16" High

42 Pounds  
17" Outside Diameter Grill  
Post Included

# About us

Since our founding in 2011, all we have ever done at Breeo is build smoke-reducing fire pits. The goal of bringing the smoke-less fire experience to homes across the country has inspired us since the beginning. Our tagline is Rethinking Fire, and it is at the core of who we are. Hand-built by our craftsman in our shop in Lancaster, PA, each individual unit is cut, shaped, welded and polished in America. We would love to revolutionize your campfire experience!

Patent-Pending Technology



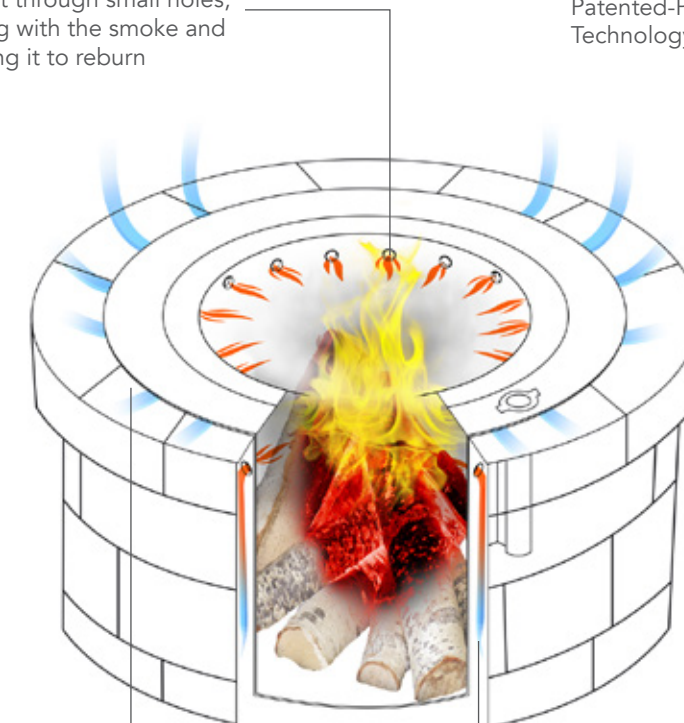
The Double Flame Fire Pit is perfect for the backyard or patio setting, as the stainless finish will not rust and looks great with other stainless outdoor appliances such as grills or fireplaces. The reflective nature of the unit adds to the fireside experience.





Hot oxygen enters the top of the pit through small holes, mixing with the smoke and causing it to reburn

Patented-Pending Technology



Main air supply enters between the stone and metal ring

Secondary air supply rises through double outer walls and exits holes at top of pit

There's nothing like relaxing around a fire ring to bring family and friends closer together. But with ordinary fire rings, smoke always blows in someone's face—usually yours. With Zentro™ stinging eyes are a thing of the past. Zentro's patent-pending technology reburns smoke before it gets anywhere near your eyes. Say hello to good times and good-bye to smoke.

## smart.

Zentro™ nearly eliminates annoying smoke for playing guitar or swapping stories. And Zentro™ works with new or existing fire rings, fitting inside diameters from 33 – 44" with a retro-fit ring, or 30 – 32 1/2" without.



### ZO-24SLFP

Zentro 24" Smoke Less Fire Pit with Lid  
- 24" Inside Diameter  
- Weight 104 lbs.  
- Fits Into 30" - 32 1/2" Inside Diameter



### ZO-24SLFP-SS

Zentro 24" Smoke Less Fire Pit with Lid - Stainless Steel  
- 24" Inside Diameter  
- Weight 104 lbs.  
- Fits Into 30" - 32 1/2" Inside Diameter



### ZO-30SLFP

Zentro 30" Smoke Less Fire Pit with Lid  
- 30" Inside Diameter  
- Weight 114 lbs.  
- Fits Into 35 1/2" - 38" Inside Diameter

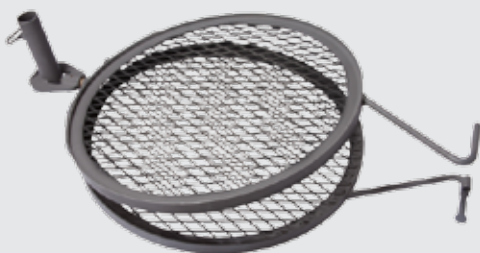


### ZO-41RFR or ZO-47RFR

41" Retro-Fit Ring (fits 33" – 38")  
47" Retro-Fit Ring (fits 38 1/2" – 44")  
Available in steel or Stainless Steel



# Cooking Accessories



**ZO-24CRG**  
24" Chicken  
Rotisserie Grill



**ZO-24GRL**  
24" Swing  
Away Grill



**ZO-24GRDL**  
24" Griddle



**ZO-24KW**  
Kettle Winch



**ZO-24AP**  
Zentro Accessory Post  
Available in steel and  
stainless steel



**Cast Iron Kettle  
with Lid & Legs**  
B-1354 -1.25 Gallon  
B-1355 - 2 Gallon  
B-1356 - 2.25 Gallon  
B-1357 - 3.5 Gallon

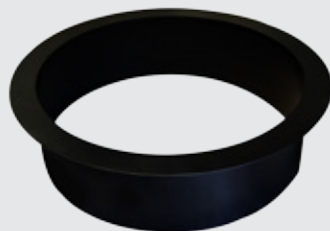


**Cast Iron Kettle  
with Lid**  
B-1380 - 1.25 Gallon  
B-1381 - 1.75 Gallon  
B-1382 - 2.5 Gallon

# Single-Wall Fire Pits



**ZO-29BFP**  
Zentro 29" Basic Fire Pit  
- 29" Inside Diameter  
- Weight 50 lbs.  
- Fits Into 29 1/2" - 32" Inside Diameter



**ZO-29RI**  
Zentro 29" Ring Insert  
- 29" Inside Diameter  
- Weight 24 lbs.  
- Fits Into 29 1/2" - 32" Inside  
Diameter



# Fireplace Insert

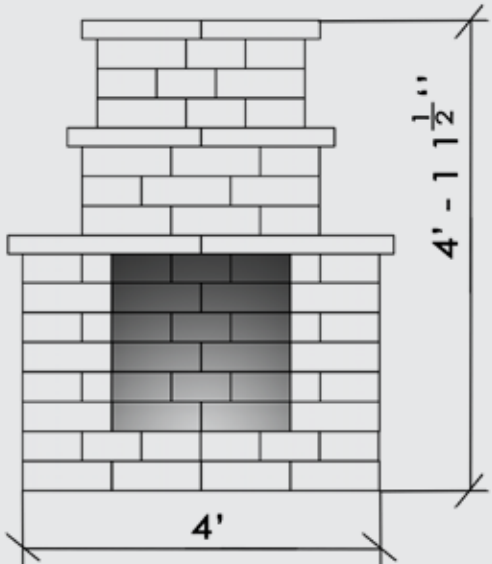
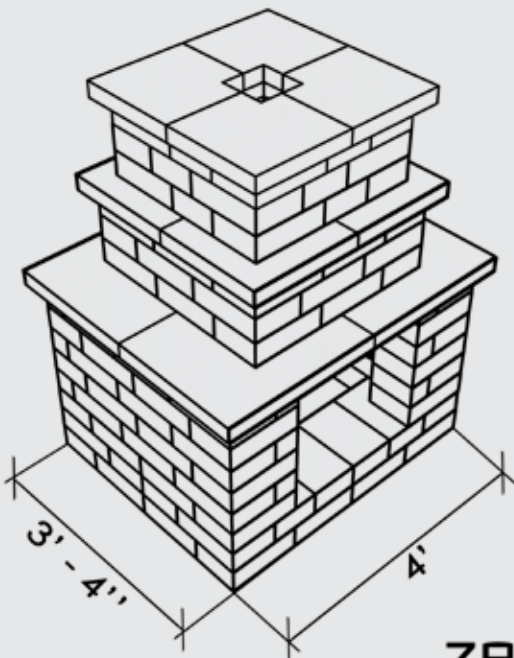


**ZO-24FPI**  
**Zentro 24"**  
**Fireplace Insert**  
**with Vent Kit**  
- 24" x 24" Inside  
Diameter  
- Weight 160 lbs.

Blocks Needed:  
130: 4x8x12  
15: 4x8x8  
12: 4x4x8  
+header pieces



**Vent Kit**  
- 10"W x 42"H  
- Stainless Steel



**zentro**  
gather round.





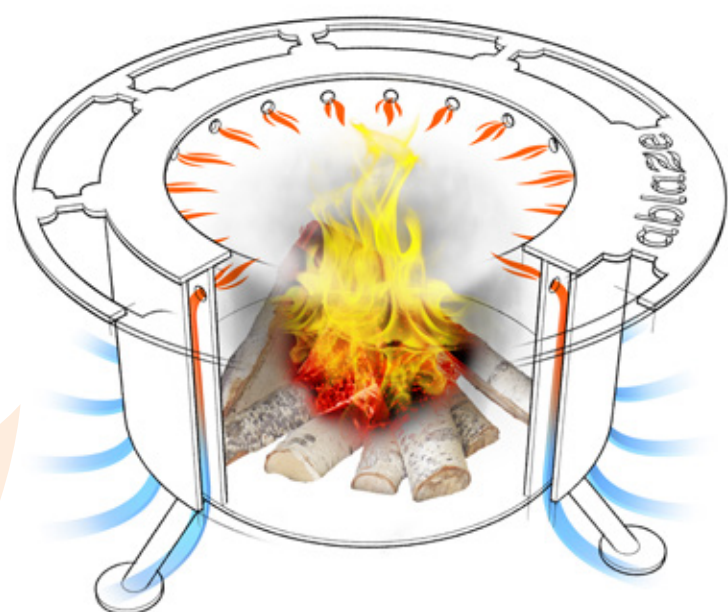
**ablaze**  
fire it up.



The Ablaze brand is all about the rugged outdoor lifestyle. Built with heavy steel, this fire pit is designed to last for years. However, it is also portable, which allows for easy transportation to the cabin or campsite.

All of the accessories for the Ablaze are the same as those for the Zentro, the only difference being the Accessory Post.

The Ablaze brand is the original smoke-less fire pit designed by Breeo. All of the other brands originate from this original use of the technology.



**AB-24SLFP**  
24" Fire Pit



**AB-24GRL**  
24" Grill



**AB-24GRDL**  
18" Griddle



**AB-24CRG**  
Chicken Rotisserie Grill



**AB-24KW**  
Kettle Winch



**AB-AP**  
Accessory Post



**Cast Iron Kettle with Lid & Legs**  
B-1354 - 1.25 Gallon  
B-1355 - 2 Gallon  
B-1356 - 2.25 Gallon  
B-1357 - 3.5 Gallon



**Cast Iron Kettle with Lid**  
B-1380 - 1.25 Gallon  
B-1381 - 1.75 Gallon  
B-1382 - 2.5 Gallon





The Luxeve Fire Pit is designed to be a beautiful outdoor fire accent to create a warm and inviting atmosphere in an upscale patio space.

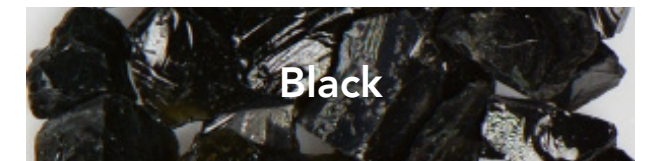
Using Breeo's patent-pending smoke-less technology, Luxeve takes it to a new level with a feeling of class.

A powder-coated exterior available in multiple colors, black modern feet, and fire pit glass around the rim gives Luxeve contrast and style.

We at Breeo believe that design and aesthetics can be applied to a wood fire pit, to make it a natural accent in the most luxurious of patio spaces.

Using the Luxeve Fire Pit as a substitution for gas fire pits has many economic, environmental, and even social benefits

Choose your favorite decorative fire pit glass to go around the top rim of the fire pit



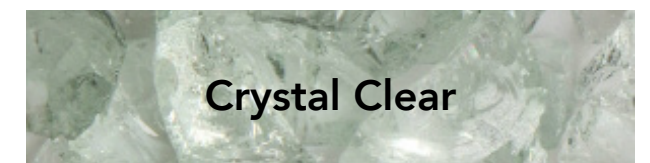
Black



Amber Brown



Gray



Crystal Clear



Dark Blue

Fuel Type: Wood  
Material: Triple walled, cold-rolled steel  
Interior finish: Black High temp Paint  
Exterior Finish: Powder Coating

Dimensions:  
33" outside diameter  
15" total height  
unit sits 3" off ground

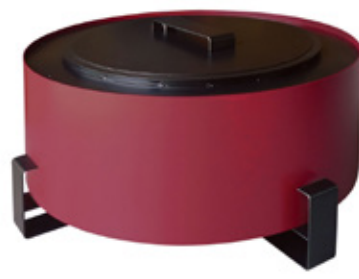
12" inside pit height  
24" inside pit diameter  
25" outside pit diameter

Steel Thickness:  
16 gauge outside ring  
14 gauge lid  
14 gauge shell

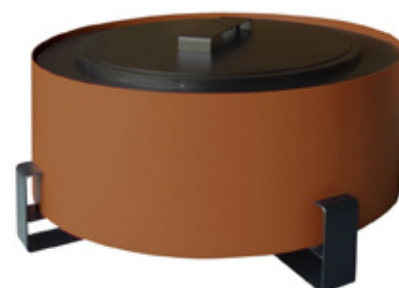
3/16" thick top ring of pit  
1/8" thick bottom  
legs are 3/16" x3" wide flat  
lid handle is 3/16" x3" wide flat



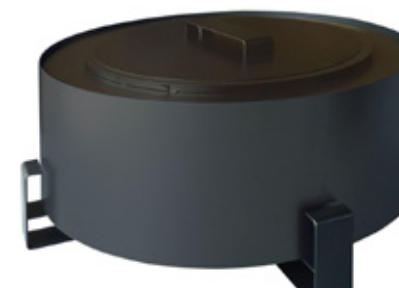
Bronze Vein



Red



Earth Rust



Earth Rust

White River  
\*Shown above



Breeo LLC • 5002 Lincoln Hwy. E Kinzers, PA 17535  
1-800-413-9848

**[www.BreeoLLC.com](http://www.BreeoLLC.com)**