



Powered by



# VDW 835N

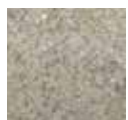
## Xtreme Plus Grouting Binder

VDW 835N is designed for small format natural stone and concrete pavers in heavy traffic areas, such as driveways, parking areas, and roads. VDW 835N is designed for use in residential and commercial settings. The following are a few specific details about the product:

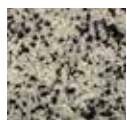
- Limited water permeability
- Can be applied in rain and low temperatures
- Self-compacting
- Highly frost and de-icing salt resistant
- Durable and abrasion resistant
- Minimum 3/16<sup>th</sup> joint width or larger, depending on traffic load
- For medium to heavy traffic loads

### Available Colors

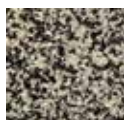
We currently have 5 colors that you can choose for VDW 835N:



Light Sand



Heather Grey



Slate



Slag



Black

### Technical Data

#### Application Time

Approx. 1 hr at 20°C | 68°F application temp.

#### Application Temperature

2-26°C | 37-80°F (Do not lay onto frozen ground.)

#### Compressive Strength

Approx. 45,0 N/mm<sup>2</sup> / 6520 psi

#### Flexural Strength

Approx. 15,0 N/mm<sup>2</sup> / 2175 psi

#### E-Modulus

8,500 N/mm<sup>2</sup>

#### Dry Densit

Set mortar density: 1,62 g/cm<sup>3</sup>

#### Water Permeability

2,0 x 10<sup>-5</sup> m/s (0,23 l/m<sup>2</sup>/min at 20% joints)

#### Storage Life

1 year if stored unopened in sealed and undamaged packaging. Must also be kept dry and frost-free. Do not store at temperatures above 20°C / 68°F

**P:** (717) 351 - 4021

**W:** <https://www.shsdistributors.com/>

**E:** [contact@shsdistributors.com](mailto:contact@shsdistributors.com)



Bringing you quality joint solutions using innovative products, backed by old fashioned service.



# Assembly Instructions

## for VDW 835N

### 1. Construction Site Requirements

---

A stable, load-bearing structure, a water-permeable sub-base and the paving layer must all be correctly designed and installed for the anticipated traffic loads and in accordance with AMTS. VDW 835N Grouting Binder is designed for small up to large format and cannot be used to compensate any settlement of the substructure, or for the sealing and waterproofing of any surfaces. Movement joints must be installed as necessary to comply with the required structural design and any anticipated levels of movement. The VDW 835N Grouting Binder can be applied on damp / wet paving and in high humidity and even in the rain.

### 2. Preparation

---

Preparation / Pre-wetting: Clean the surface thoroughly of all dirt, cement residues, organic materials or any other possible contaminants including cleaning out all of the joints to the required depth. Thoroughly pre-wet the surface of the paving and mask adjacent surfaces which are not to be jointed. Always use clean and fresh tap water!

### 3. Mixing

---

Open your SHS 55lb bag of sand and pour it into a pail or an appropriate mixer such as the SHS Distributors cone mixer. Add (component A and B) of the VDW 835 N Grouting Binder liquid from the bottles into the pail or mixer and mix for 3 to 5 minutes until smooth and homogeneous. Proper mixing is important! When mixing in a pail use the appropriate spherical paddle mixer or SHS superior auger mixer to insure a properly mixed end product. Any material that is not thoroughly mixed must not be used. No water should be added during the mixing process.

### 4. Filling the Joints

---

Apply immediately after mixing, by pouring the VDW 835N Grouting Binder directly onto the pre-wetted surface. Work the self-compacting material thoroughly into the joints using a rubber squeegee. If the viscosity of the product diminishes re-moisten by spraying lightly with water from a hose. The paved area must be kept constantly wet during application. We recommend working from the highest to the lowest points. Do not mix part units of the product. Any unmixed material must not be used.

### 5. Brushing Off

---

Remove any excess VDW 835 N Grouting Binder residue from the area after about 5 min. (immediately at temperatures over 20 °C / 68 °F) spraying lightly with water from a hose at a distance of about 25 cm. Avoid washing material out of the joints. Be careful to clean the paved surface towards areas not yet jointed and do not allow any water containing residues to pond, stand, dry out or run-off over completed areas. Finally remove any remaining fine residues, again with a damp coconut fiber brush – do not brush any residual dry material into any unfilled joints. Clean this brush in water frequently.

### 6. Important Information

---

Remain off the freshly applied areas for a period of min. 24 hours, or until the paving surface is no longer tacky. Then the areas can be walked over. The area can be fully released to vehicular traffic after 3 – 5 days, when fully hardened. In general, a strength test should be carried out before final clearance of the area. A very thin film of the resin binder will remain on rough surfaces or any surfaces that are not cleaned thoroughly. This film will disappear after a period of exposure to traffic and weathering.